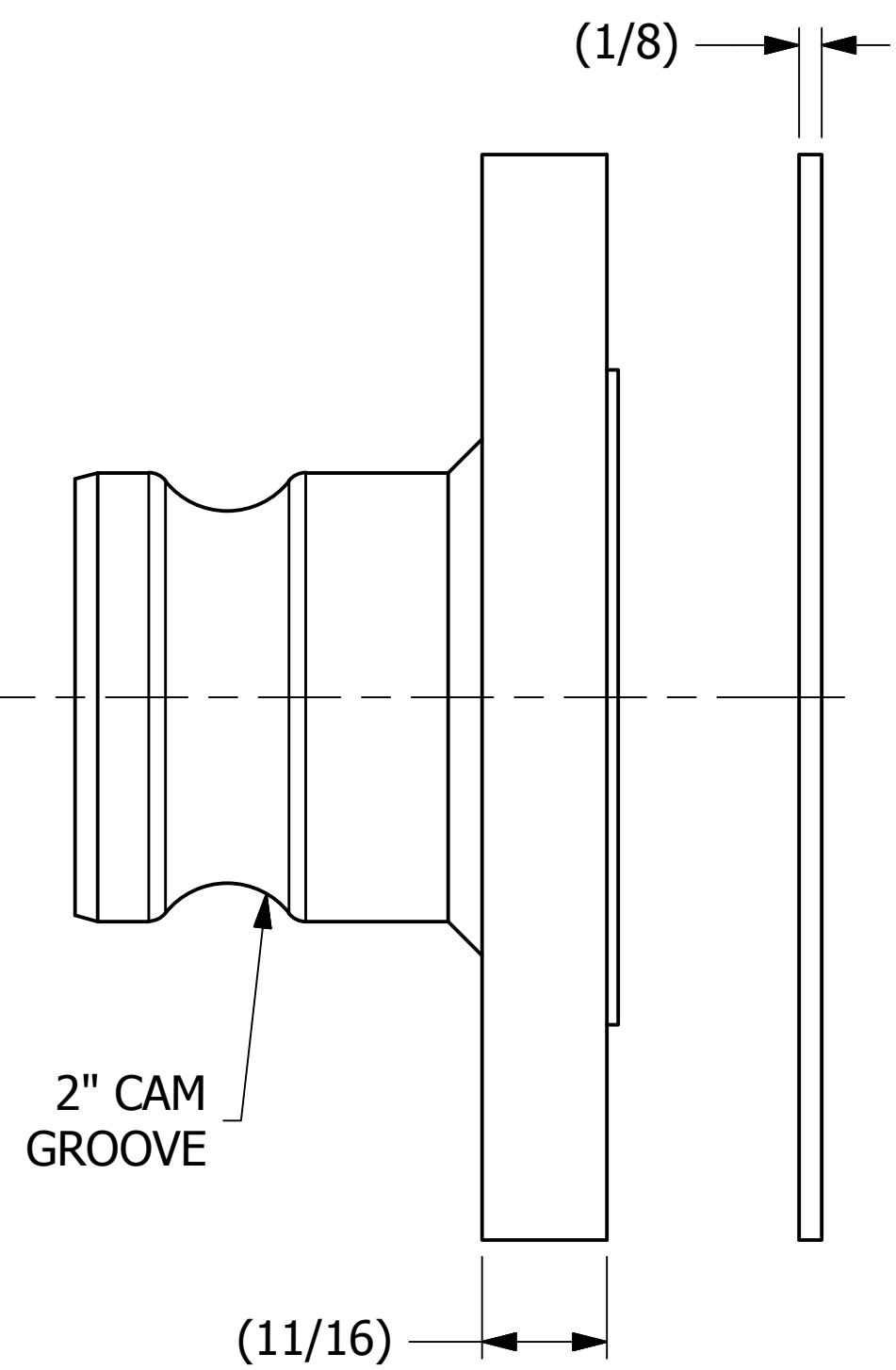
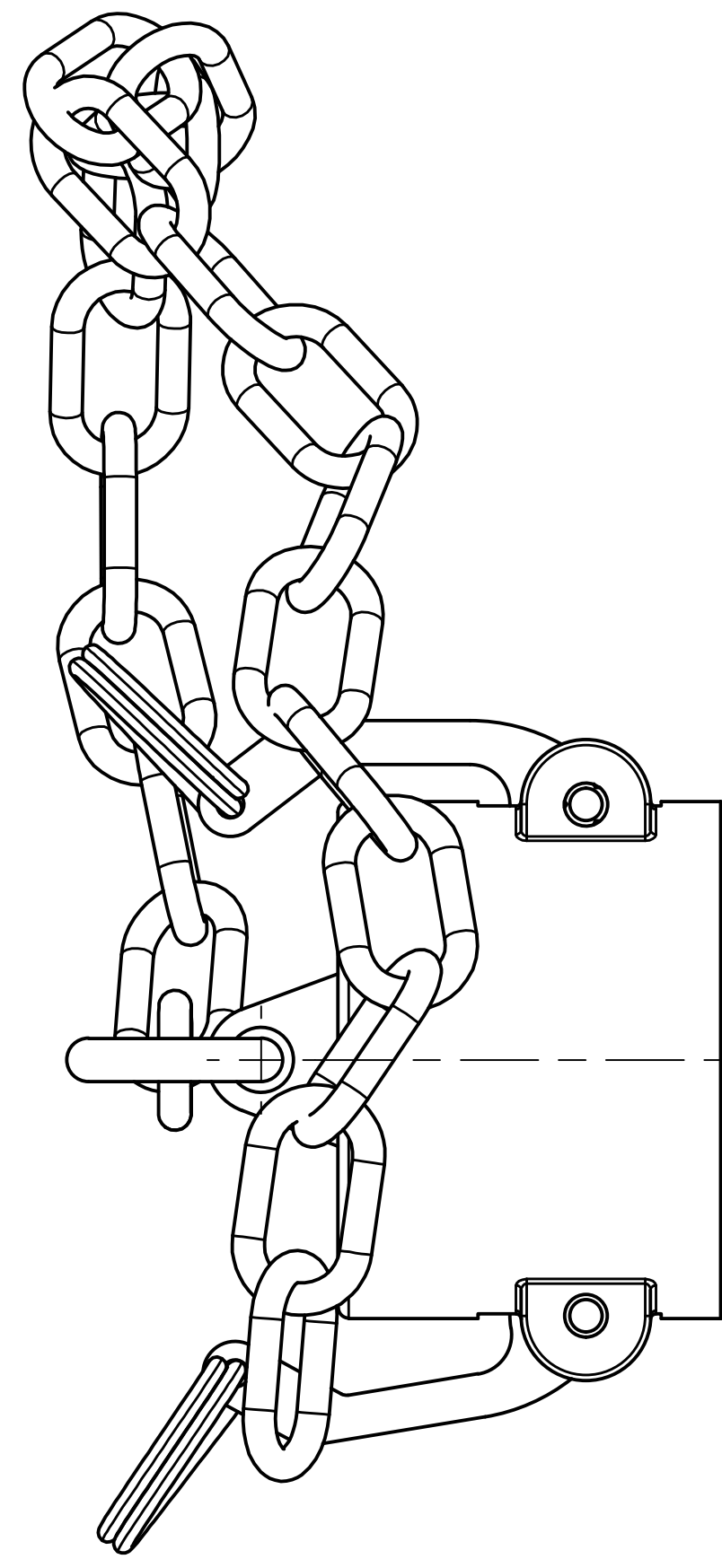
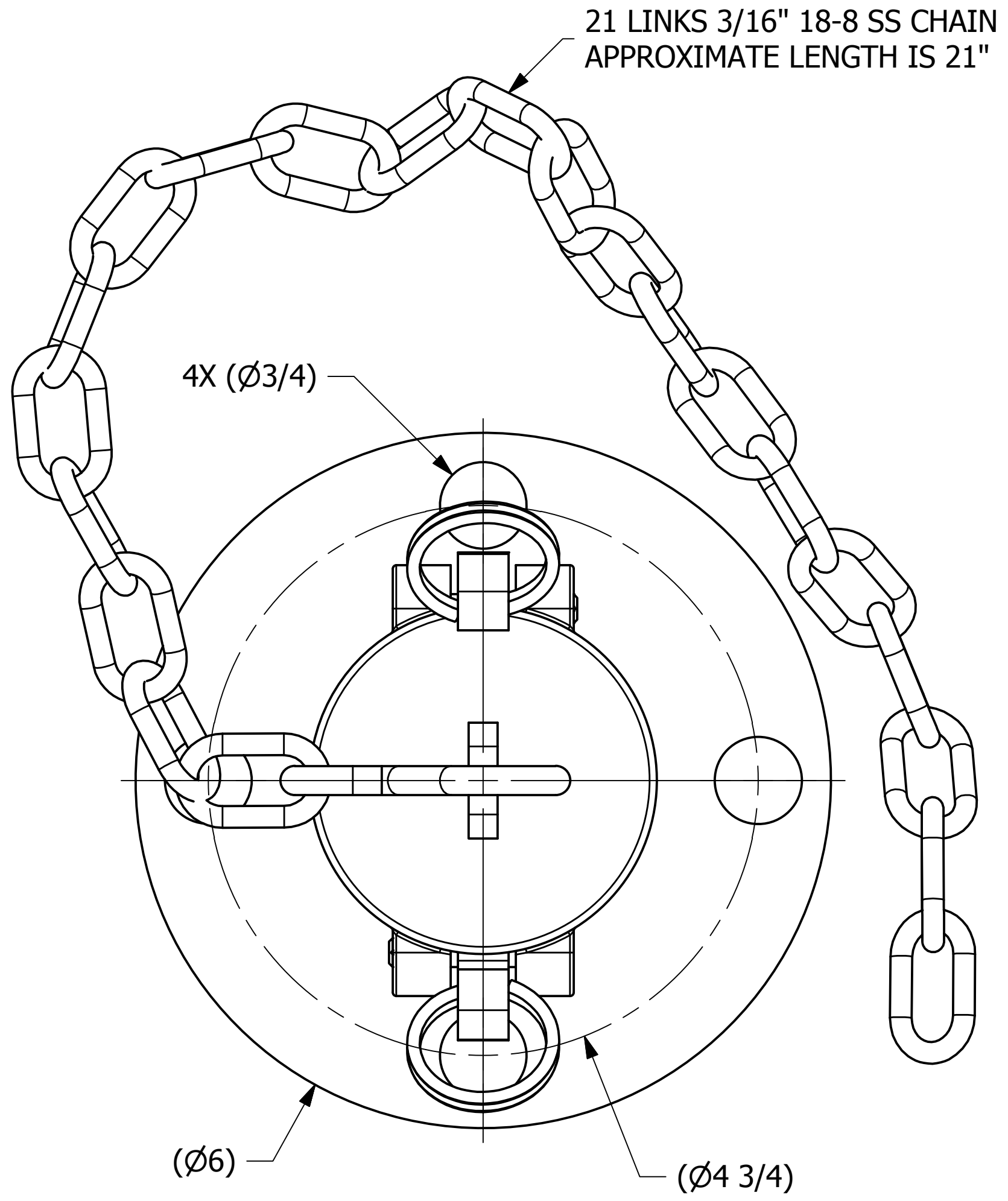


SALES DRAWING SALES DRAWING

SALES DRAWING SALES DRAWING



- NOTES:
1. GASKET MATERIAL IS BLACK VITON B.
 2. APPROXIMATE HEIGHT IS 4 1/4".
 3. QUICK CONNECT MEETS A-A-59326D.

REV	BY	DATE	DESCRIPTION
D	WEB	10-12-18	REPLACED K2S150F7 WITH K20S150F7
C	WEB	8-11-17	UPDATED VIEW
B	JG	10-22-14	ADDED Ø2" DIM, BREAKOUT VIEW
A	JG	9-22-14	RELEASED FOR PRODUCTION

<small>UNLESS OTHERWISE SPECIFIED DIMENSIONAL TOLERANCES FRACTIONAL: ±1/16 X.XX: ±.03 X.XXX: ±.015 ANGLE: ±1° DEBURR ALL SHARP EDGES. ALL MACHINED SURFACES TO HAVE A 125 RMS FINISH UNLESS NOTED OTHERWISE.</small>	DRAWN BY:	JG
	CHECKED BY:	CHL
	PROTOTYPE BY:	JG
	PROTOTYPE DATE:	6/30/2014
	APPROVED FOR PRODUCTION BY:	CHL
	PRODUCTION DATE:	9/22/2014

SALCO PRODUCTS, INC.

PART NAME: **TOP FITTING ASSEMBLY 2" FLANGED**

MATERIAL: **STAINLESS STEEL**

PROJECT #: **R140625FR** SHEET #: **1 OF 1** SCALE: **1:1**

DRAWING #: **C39371** PART #: **K20S150F7A**